

## Specifications

### Microscope

Type	Galileo convergence
Magnification selection	3 steps by rotation drum
Magnification	10x, 16x, 25x
Eyepiece	12.5x
Diopter adjustment	-5D ~ +3D
Total magnification (field of view)	10x (φ 22.5 mm) 15.98x (φ 14.1 mm) 25.53x (φ 8.8 mm)

### Illumination

Slit width	Continuous from 0 to 14 mm
Slit length	Continuous from 1 to 14 mm
Aperture	Continuous from 1 to 14 mm, φ 0.3, 1, 5, 10, 14 mm
Slit angle	0° to 180°
Filter	Blue, Redfree
Light source	LED

### Power

Power consumption	40VA
Input (Primary)	AC 100-240V 50-60Hz

### Dimensions and Weight

Standard (with table top and chinrest)	550mm(W) x 399mm(D) x 520mm(H), 15.2 Kg
--	---

## Optional Accessories



» External Fixation Target (SO-FT02)



» Hruby Lens (SO-HL01)



» Yellow Filter



» Tonometer Mount for R900 (SO-TM1)



» Tonometer Mount for 870 (SO-TM2)

- » 12.5x Measuring Eyepiece
- » 20X Eyepiece
- » Parallel Binocular Tubes (PB-2)



TOPCON CORPORATION



TOPCON CORPORATION



TOPCON CORPORATION

\*Subject to change in design and/or specifications without advanced notice.

**IMPORTANT** In order to obtain the best results with this instrument, please be sure to review all user instructions prior to operation.

**TOPCON** TOPCON CORPORATION



PERFORMANCE  
YOU CAN COUNT ON

**TOPCON**

732-727-0607  
www.metroophthalmic.com

Metro  
Ophthalmic

PRINTED WITH SOY INK  
© 2010-2015 TOPCON CORPORATION All Rights Reserved  
2015 E035-3 GE

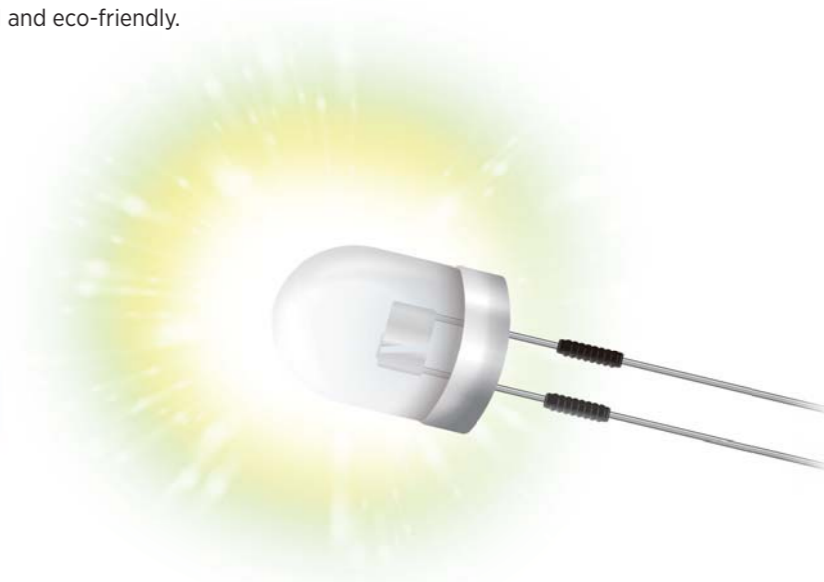
# Basic, Economical, Environmentally Friendly - SL-2G LED Slit Lamp

Long Life LED Illumination Saves Power, Helps the Environment and Reduces Bulb Replacement.

## Still Using Halogen Lamp Illumination?

Light Emission Diodes (LEDs) are increasingly being applied to optical and medical instrumentation thanks to their clear and bright light, low heat illumination and long life. LEDs also have the added advantage of being environmentally friendly reducing the waste of frequently replacing halogen and tungsten bulbs.

As a leader in Ophthalmic Instrumentation, Topcon is incorporating LED as the main illumination in its SL-2G slit lamp. The approx 10,000 hours lifetime of the LED is expected of 100 times longer than conventional halogen bulbs. This makes the SL-2G easier to maintain, economical and eco-friendly.

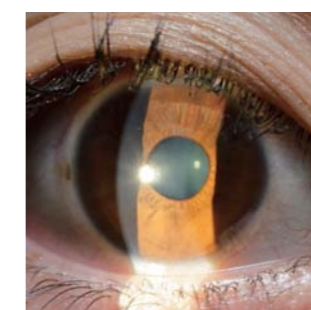


## Features

- » Long Life and Power-Saving LED Illumination
- » Easy to Install with Incorporated AC Power Supply
- » Three Magnifications (10x; 16x; 25x)
- » Compact and Practical , Ergonomic Design

## Quality of Illumination

Uniform and consistent illumination is achieved by LED source.



## Three Magnifications

10x, 16x, 25x cover the needs for a comprehensive slit lamp examination.



## Smooth Illumination Adjustment

The LED illumination can be adjusted continuously from 0 to maximum.



## AC Adapter

The AC adapter included with the SL-2G enables the use of any power source and adds flexibility to the installation in different types of furniture and delivery systems.

